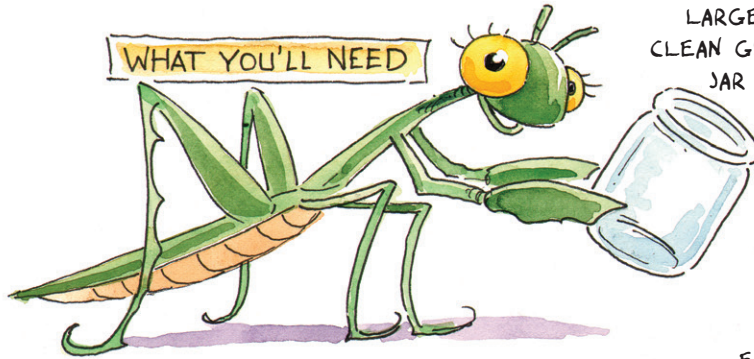


Whoa!
WORMS

WORM FARM

WORMS ARE NOT ONLY GREAT DANCERS—THEY'RE ALSO IMPORTANT TO THE ENVIRONMENT. THEY CHANGE THE DEAD MATERIAL FROM PLANTS AND ANIMALS INTO NUTRIENTS THAT HELP PLANTS GROW. WORMS ALSO DIG TUNNELS IN THE GROUND, WHICH HELPS THE SOIL "BREATHE." WATCH THEM SHIMMY THROUGH THEIR TUNNELS BY CREATING YOUR VERY OWN WORM WORLD!

WHAT YOU'LL NEED

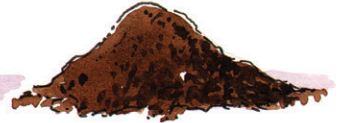


LARGE,
CLEAN GLASS
JAR

GRAVEL



SOIL



EARTHWORMS (DUG FROM YOUR
YARD OR PURCHASED FROM
A LOCAL BAIT SHOP)

DEAD
LEAVES

WHAT TO DO

1. LAYER THE BOTTOM OF THE GLASS JAR WITH GRAVEL, THEN PLACE SEVERAL INCHES OF SOIL ON TOP. SPRINKLE DEAD LEAVES OVER THE SOIL AND MOISTEN WITH A FEW DROPS OF WATER.
2. PLACE THE EARTHWORMS IN THE JAR, THEN PUT THE JAR IN A VERY DARK PLACE (LIKE A CLOSET OR BASEMENT). IMPORTANT: DO NOT PUT A LID ON THE JAR. SPRINKLE THE SOIL WITH WATER EVERY 2 DAYS.
3. WHEN YOU WATER THE SOIL, CHECK ON YOUR WORMS' PROGRESS. YOU'LL BE ABLE TO SEE THE CRAZY TUNNELS THEY'VE DUG!
4. AFTER A COUPLE OF WEEKS, BID YOUR SLIMY FRIENDS GOODBYE AND SET THEM FREE IN A GARDEN AREA.

