



WHICH MONSTER ARE YOU?

by Ginger Garrett

HAVE YOU EVER wondered what life would be like as a monster? Well, you may be more monstrous than you know! Take the quiz below and see what you may have in common with four legendary beasts.

What is your favorite workout?

- A. A quick swim
- B. A fast game of catch-me-if-you-can
- C. A long, slow walk through the city at night
- D. Skydiving in a thunderstorm

What is your favorite movie?

- A. *Jaws*
- B. *The Twilight Saga: New Moon*
- C. *Bride of Frankenstein*
- D. *The Birds*

What's your favorite color?

- A. Pond scum green
- B. Blood red
- C. Clay gray
- D. White lightning

Your two best friends begin arguing. How would you stop them?

- A. Drown and eat them
- B. Dismember and eat them
- C. Stomp them with your giant boots
- D. Singe them with bolts of lightning

That last question made you hungry! Where will you look for a snack?

- A. In the vegetable bin
- B. The local butcher shop (lamb chops, yum!)
- C. Whatever you like, master. I'll follow your lead.
- D. Your backyard birdfeeder

If you could live anywhere in the world, which country would you choose?

- A. Japan
- B. France
- C. Czech Republic
- D. United States

Illustrated by Julie Paschkis

text © 2016 by Ginger Garrett, art © 2016 by Julie Paschkis

SCORING KEY

IF YOU SCORED mostly **A** you are: **A KAPPA**

Kappa are mischievous water monsters that are rumored to live in the rivers, murky ponds, and lakes of Japan. Kappa have been known to gobble up small children, so Japanese folklore recommends that new parents write the name of their child on a cucumber and toss the cucumber into the water before swimming. Kappa are said to absolutely love the taste of cucumbers and are more than happy to eat a cucumber in exchange for a child's life. Today, if you visit Japan, you may still see signs near bodies of water, warning parents that kappa might be lurking nearby.

Many people speculate that the legend of the kappa is based on sightings of the Japanese giant salamander, which lives in northern Japan's cold, fast-flowing mountain rivers and streams. The largest Japanese giant salamander on record weighed 26.3 kilograms, which is nearly 58 pounds! The salamander is protected by law and is quite rare today, so you have to be pretty lucky to spot one of these strange and wonderful creatures.



IF YOU SCORED mostly **B** you are: **THE BEAST OF GÉVAUDAN**

Robert Louis Stevenson described the Beast of Gévaudan as “the Napoleon Bonaparte of wolves.” This Beast was believed to be an unusually large wolf that roamed the French countryside in the late 1700s, looking for victims to devour. Its preferred menu included livestock such as sheep or cows, plus unwitting field hands and lonely shepherds. The first sighting of the Beast was recorded in an area of central France formerly known as Gévaudan. Dozens of eyewitnesses reported attacks by this fearsome creature, and soon people were living in mortal fear of it. Many believed the Beast to be supernatural, with the ability to transform into a human when the sun rose each morning.

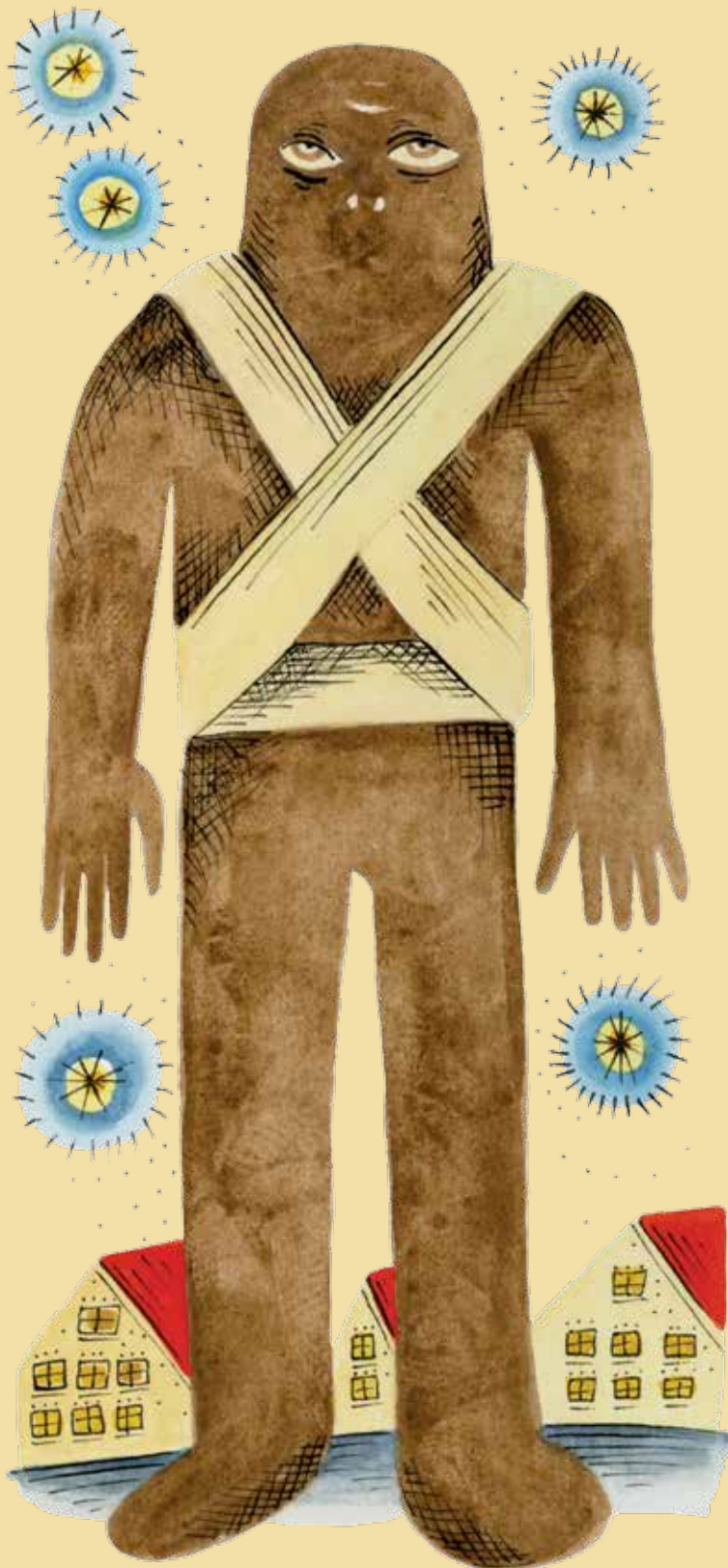
When attempts to catch and kill the murderous Beast failed, King Louis XV sent soldiers as well as professional hunters to kill it. One legend tells that the Beast was slain at last by a silver bullet. Others believe the Beast never really died at all, but is still stalking the countryside, trailing its next victim. The Beast became the source of many popular werewolf legends, and if you watch a werewolf movie today, you just might catch a sly reference to the Beast and his believed home, Gévaudan.



I'M GOOD AT PERSONALITY TESTS!
BECAUSE I HAVE SO MUCH PERSONALITY.



MONSTROUS LOTS.



IF YOU SCORED mostly **C** you are:
THE GOLEM

Jewish folklore tells of a giant “helpless slave” that is made from clay and can be brought to life whenever the Jewish people need protection. Called the Golem, its legends may have inspired the classic horror story *Frankenstein*.

References to golems appear throughout medieval Jewish literature, including in a set of directions for creating a golem that were written down in the twelfth century. The most well-known golem tale concerns the sixteenth-century rabbi of Prague. During a dreadful period of anti-Semitic persecution, the rabbi was said to have created a golem from the clay of the Vltava River. In one version of the story, the rabbi brought the Golem to life by writing the word *emet*, the Hebrew word for “truth,” on its forehead. By erasing the *e* to spell *met*, the Hebrew for “death,” the rabbi could deactivate the Golem.

The Golem was a powerful force protecting the Jews, but it was also stupid and clumsy. This perfect servant tended to cause problems by obeying commands too literally. In some stories the Golem is portrayed as a frightening, destructive brute that, once loosed on the world, grows out of control and causes chaos for the Jews; but in other stories it is tender and kind.

It is said that the body of the Golem still lies hidden in the attic of the synagogue in Prague, waiting to be reawakened if the Jews are again threatened.



IF YOU SCORED mostly **D** you are: **THE THUNDERBIRD**

Legends from around the world tell of a giant bird that rules the skies and is the cause of thunder and lightning. In North America, where it features in the mythology of many Native American peoples, this powerful creature is known as the Thunderbird. It waters the earth, enabling plants to grow. Thunder is the sound of its beating wings, and lightning flashes from its eyes.

Today, sightings of a mysterious giant bird are sometimes still reported throughout the United States. What large bird of prey might be easily confused with the mythical Thunderbird? The California condor is one likely candidate. The largest bird in North America, the California condor has a wingspan of nearly ten feet. Imagine the shadow a bird of that size would cast! The California condor went extinct in the wild in the 1980s, but thanks to the amazing efforts of conservationists, birds bred in captivity have now been reintroduced into their natural habitats. 🐞

H'MMMMM. THIS SAYS I HAVE THE PERSONALITY ...
OF A GOLEM-THUNDERBIRD-WEREWOLF-KAPPA.



A MONSTROUS
CREATURE KNOWN
AS: THE LADYBUG OF
CRICKET COUNTRY.